

# **CENTRAL PLAZA**

---

AT KHOPOLI

# Locational Features

## CENTRAL PLAZA

- Just opposite to Khopoli Railway Station
- Walking distance to Khopoli Bus depot
- Major schools, colleges and hospitals in close proximity
- 15 minutes drive to Zenith Waterfall - the official picnic spot in Khopoli

- 15 minutes drive to Adlabs Imagica Theme Park
- Very close to Gagangiri Ashram and Khopoli Market
- Surrounded by lush evergreen mountains
- 15 minutes drive to Lonavala



# STATION VIEW



Site layout

# Project Features

## CENTRAL PLAZA

- 2 Wings of Ground + 7 Storey and 2 Wings of Ground + 9 Storey Building
- Located in the heart of Khopoli and Just opposite to Khopoli Railway Station
- Earthquake Resistance RCC Structure with Attractive Elevations
- Advance Fire Fighting System
- Natural Light and Ventilation for each flat
- Pollution free Environment
- Ample Car Parking
- Backup for Common Area Lights, Elevators and Water Pumps
- Entrance Lobby with False Ceiling and Decorative Light Fittings
- CCTV Security System





# Amenities

for the luxurious in you...

- Vitrified Flooring in all Rooms
- Lambi Finish walls with Plastic Paints
- Acrylic Paint on External Walls
- Concealed Copper Wiring, Telephone, TV, A.C. Point in Living Room. A.C. Point in Master Bedroom
- Branded MCB and ELCB for Electricity Safety
- Granite Kitchen Platform with S.S. Sink
- Color Glazed tiles up to beam level in Kitchen
- Branded plumbing fittings and sanitary wares
- Concealed plumbing with hot and cold mixer arrangement
- Anti-Skid flooring in all the bathrooms and terraces
- Designer Bathrooms with door height premium quality tiles
- Solid Laminated flush main doors with elegant hardware fittings
- Water Proof PVC bathroom doors
- Marble door frames in bathrooms
- Powder Coated Aluminum Sliding window with tinted glass

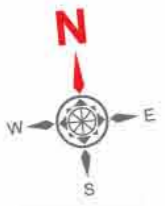




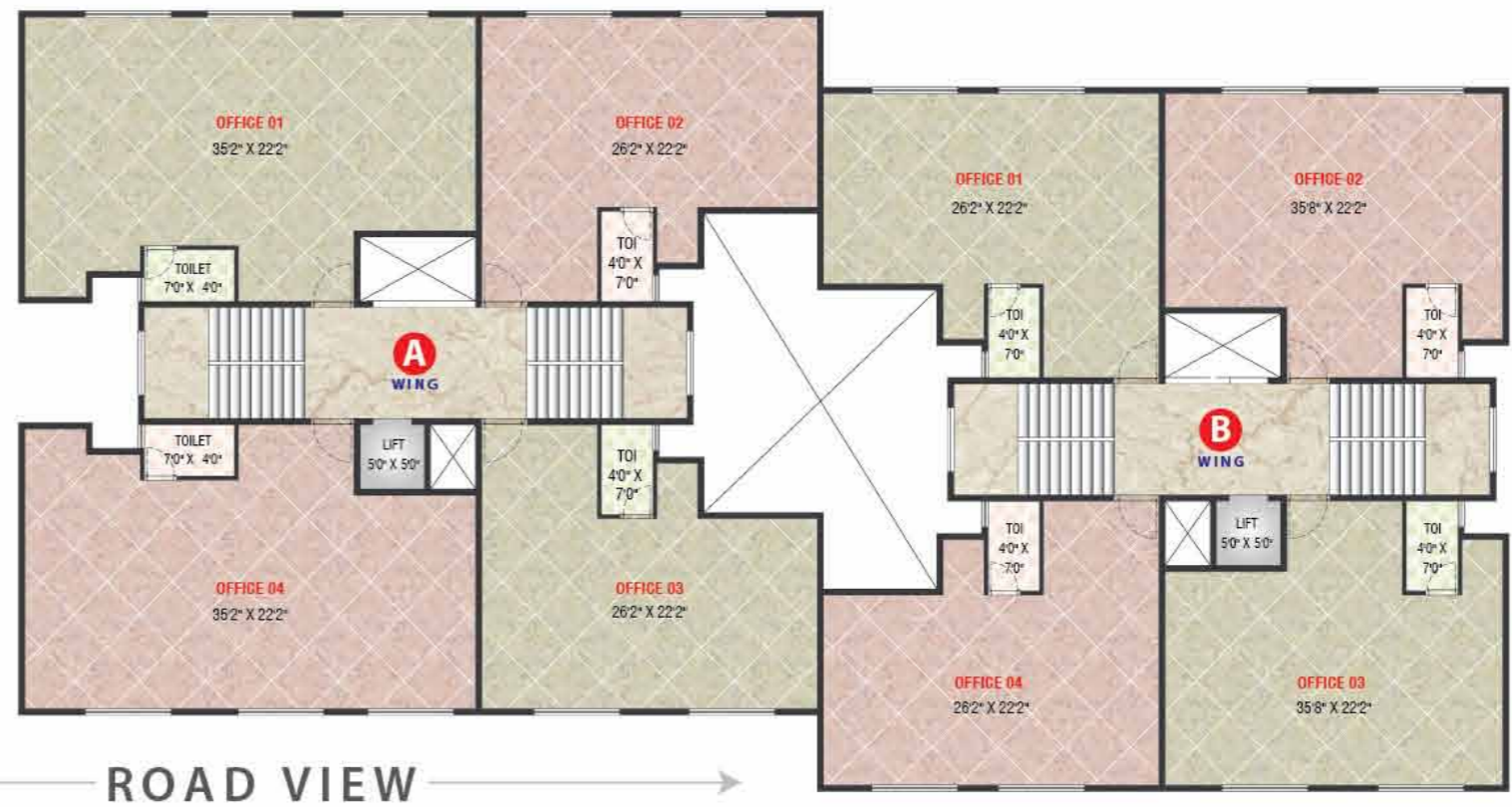
1ST FLOOR PLAN



BUILDING NO. 1



BUILDING NO. 1



2ND FLOOR PLAN









**BUILDING NO. 1**

**CENTRAL PLAZA**



**3RD FLOOR PLAN**





**CENTRAL PLAZA**



**4TH - 6TH - 8TH FLOOR PLAN**



**BUILDING NO. 1**



**BUILDING NO. 1**

**CENTRAL PLAZA**



**5TH - 7TH FLOOR PLAN**







**BUILDING NO. 2**

**CENTRAL PLAZA**

**4TH - 6TH - 8TH - 10TH FLOOR PLAN**

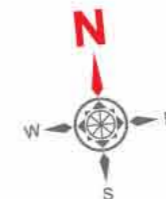




**CENTRAL PLAZA**

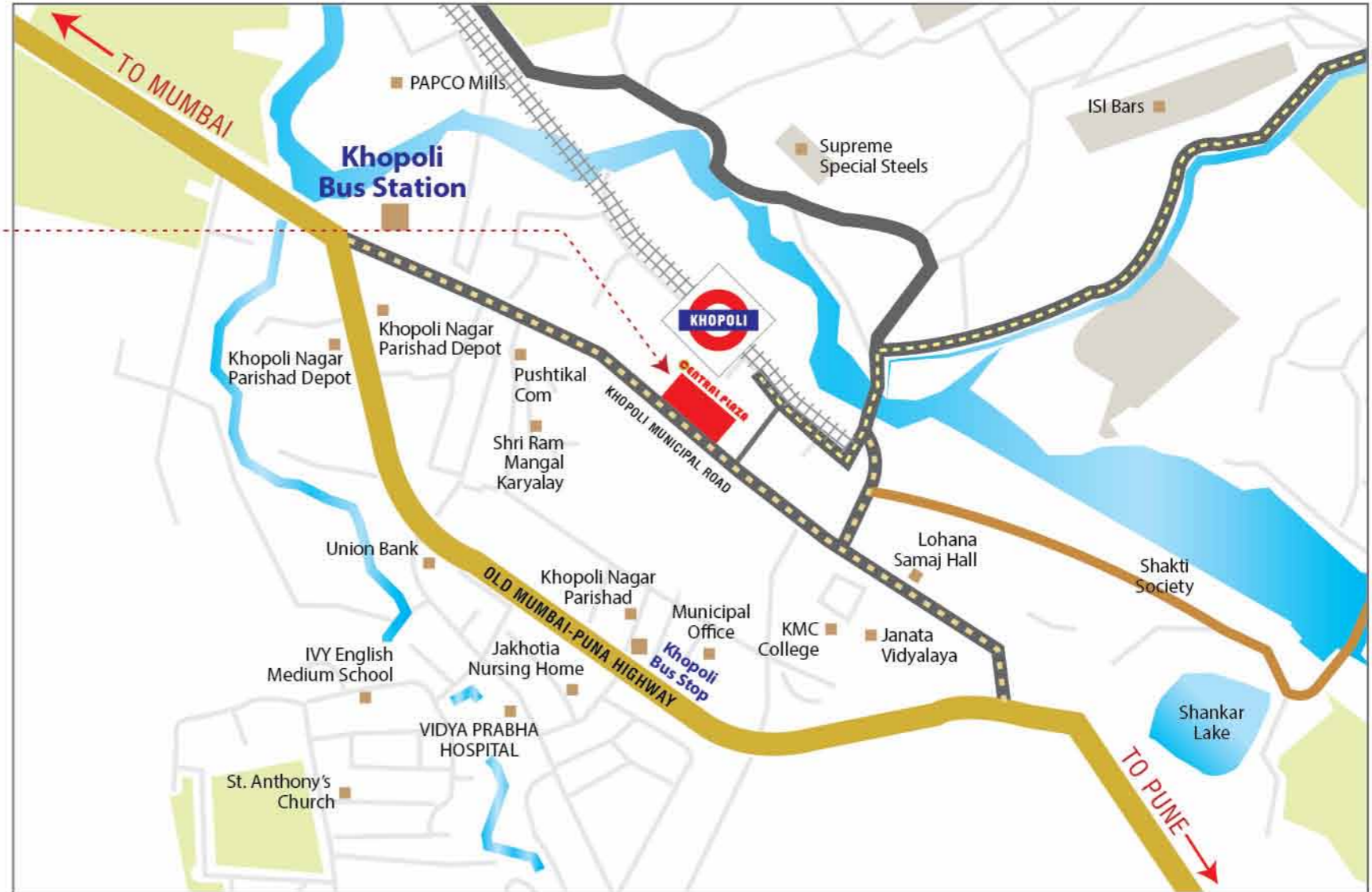


**5TH - 7TH - 9TH FLOOR PLAN**



**BUILDING NO. 2**

# CENTRAL PLAZA



Project by :



**CLASSIC**  
BUILDERS & DEVELOPERS LLP

**SITE ADD :** CTS NO. 4164-4171 / 4175 / 4176, M.G. ROAD, OPPOSITE TO KHOPOLI RLY. STN. KHOPOLI.

**Corporate Office :**

Classic Builders & Developers LLP  
510, The Landmark, Plot No. 26A, Sector-7,  
Kharghar, Navi Mumbai - 410 210. Contact : 9022276488

**For Sales : +91-9699457700**

**Architect :**

**Abhikalpa Architects & Interior Designer**

**RCC Consultant :**

**Yateesh Tare**

This brochure is purely conceptual, indicative and not a legal offering. All illustrations & pictures are artist's impression only. The Plans, drawings, amenities etc. are subject to the approval of respected authorities and may be changed without notification if necessary.  
The Promoter / Architect reserves the rights to add / desire / alter any items / details / specifications / elevation mentioned here in.